



**CTE**

**DIGITAL  
BUSINESS**



# DIGITAL BUSINESS

CTE

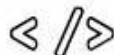


The image features a vibrant blue background with a pattern of glowing fiber optic cables. In the center, there are two overlapping circles. The left circle is a solid dark blue and contains a white plus sign. The right circle is filled with diagonal blue and cyan stripes and contains the text "Digital Business" in white. A thin black line forms a partial circle around the striped circle, with two small white plus signs positioned at the bottom left and bottom right of this line.

# Digital Business

Sault Area High School

DB





Digital  
Business



Digital  
Business  
**Get Connected**





**D**igital **B**usiness



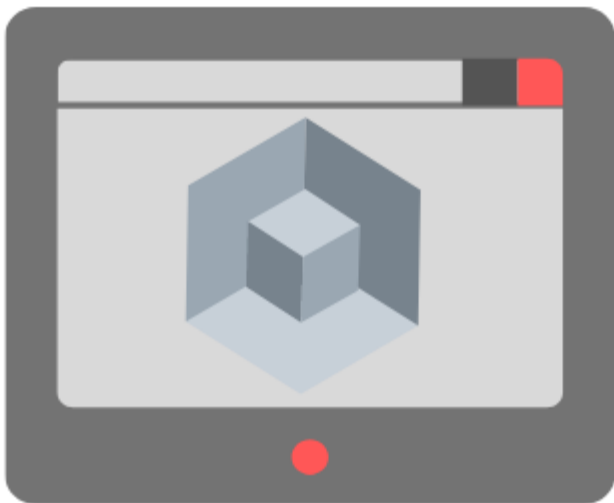
DB

DIGITAL BUSINESS





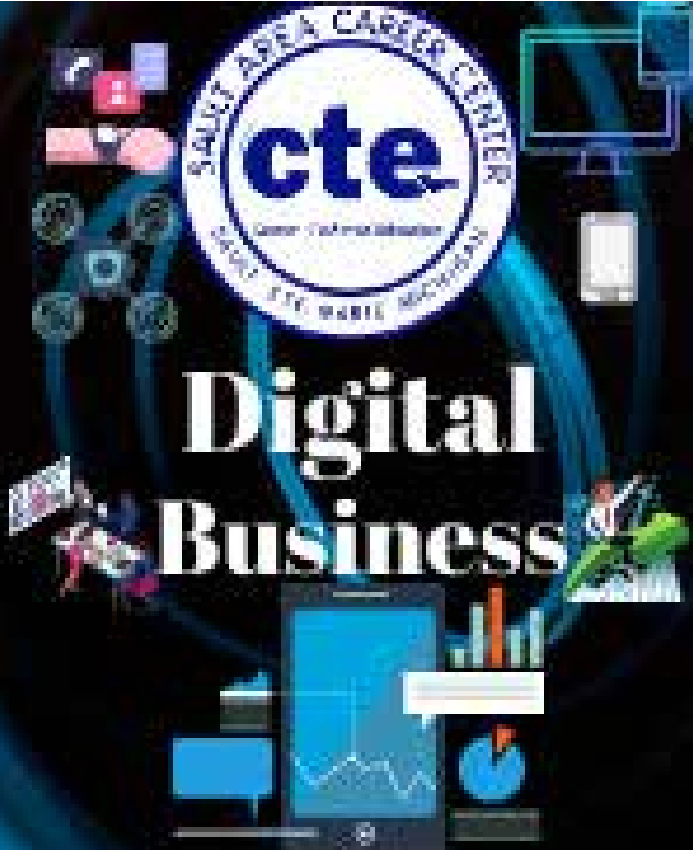
# Digital Business



**CTE**



# Digital Business





SAULT AREA CAREER CENTER

**D**  
**B**

cte

Career - Technical Education

SAULT STE. MARIE MICHIGAN



*DIGITAL*  
*BUSINESS*

SAULT STE. MARIE

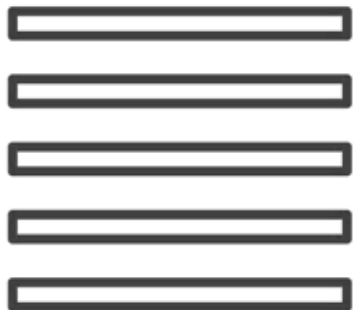




digitail  
business



*cte*



Digital Business





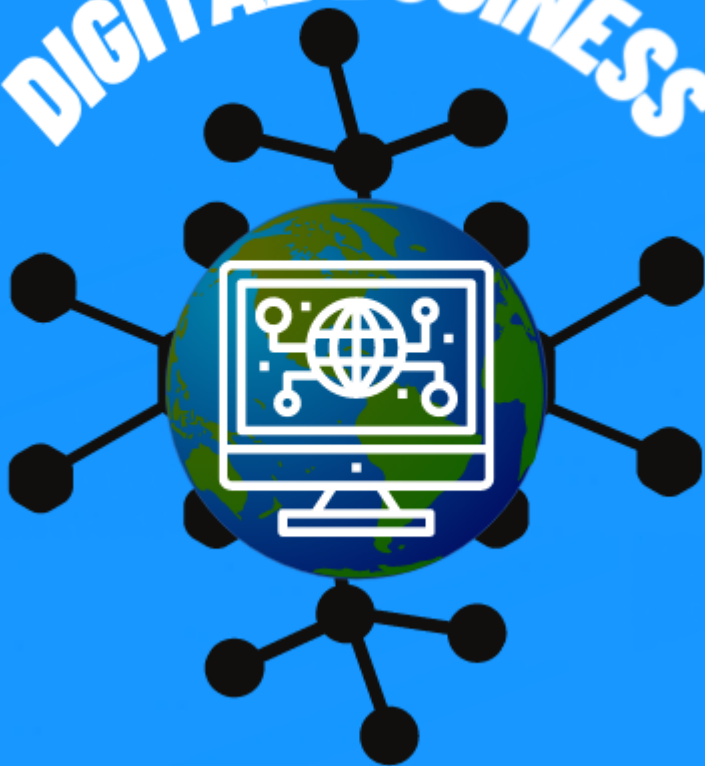
Digital  
Business



**CTE**  
**Digital Business**

**Soo Area**  
**High School**

**DIGITAL BUSINESS**







SAULT AREA CAREER CENTER

**cte**

*Career - Technical Education*

SAULT STE. MARIE MICHIGAN

The letters 'CTE' are rendered in a bold, yellow, sans-serif font. Each letter is outlined with a vibrant, multi-colored border that transitions through shades of cyan, magenta, and red. The letters are centered and set against a bright orange starburst background consisting of numerous sharp, radiating lines.

**WE MEAN  
BUSINESS**





Est. 2019

\$

\$



\$

\$

# DIGITAL BUSINESS

SOCIAL MEDIA BUSINESS MARKETING





**DIGITAL BUSINESS**





**BUSINESS**

*Mrs. Watchorn*



# Digital Business

SAULT AREA CAREER CENTER



# DIGITAL BUSINESS

*Ms. Watchorn*





Digital Business

START

# DIGITAL BUSINESS





# ***Digital Business***

with Mrs. Watchorn





DIGITAL  
BUSINESS  
coursera



MS. WATCHORN

DIGITAL



BUSINESS



***Digital Business***